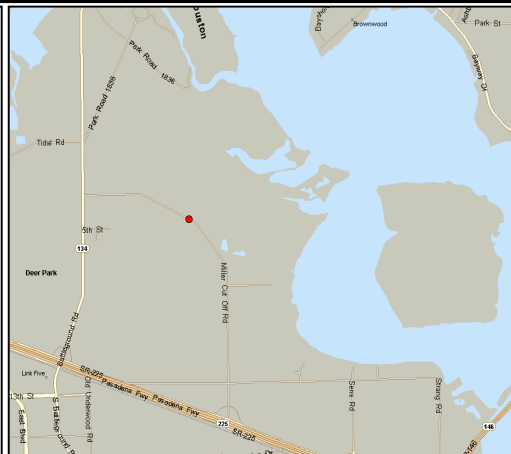


# Battleground Oil Specialty Terminal Company LLC ("BOSTCO")



**Delivering Energy To Improve Lives And Create A Better World**

## Terminal Specifications

- ❑ 185 acres located on the Houston Ship Channel
- ❑ 57 tanks ranging in size from 30,000 to 320,000 barrels with a total storage capacity of 7,080,000 barrels



## Commodities Handled

- ❑ Residual Fuel Oil, LSFO, HSFO, Feedstocks, Crude, Distillates, Blendstocks, Gas Oils, Bunkers, ULSD, Chemicals, and Refinery Grade Propylene

## Access

- ❑ Marine service via 14 berths accessible by the Houston Ship Channel
  - Two ship docks (45' MLW) capable of handling up to Suezmax size vessels (1,000' LOA)
  - Twelve barge docks (15' MLW)
- ❑ Highway access from East Sam Houston Tollway and State Highways 225 and 146
- ❑ Rail access from the Union Pacific
- ❑ Pipeline (receiving): ExxonMobil Baytown (ULSD)

## Terminal Services

- ❑ 30 Railcar Unloading Spots
- ❑ Product Blending and Heating
- ❑ Berths Available for Lightering and COC Inspections as well as Lay Berths
- ❑ Terminal and Dock Expansion Capacity

## Major Features

- ❑ High Speed Pumping Rates of 30k bbl./hr. for Loading Ships
- ❑ Dual Stripping Systems to Ensure Product Integrity
- ❑ LSFO Segregated Piping Systems
- ❑ Pipeline Connection ExxonMobil Baytown Inbound
- ❑ Additional Land for Expansion

## Terminal Address

1836 Miller Cut Off Road  
La Porte, TX 77571  
(281) 946-1600



## Business Address

300 Beltway Green Blvd.  
Pasadena, TX 77503  
(281) 946-1843

**Kinder Morgan provides energy transportation and storage services in a safe, efficient and environmentally responsible manner for the benefit of people, communities and businesses**