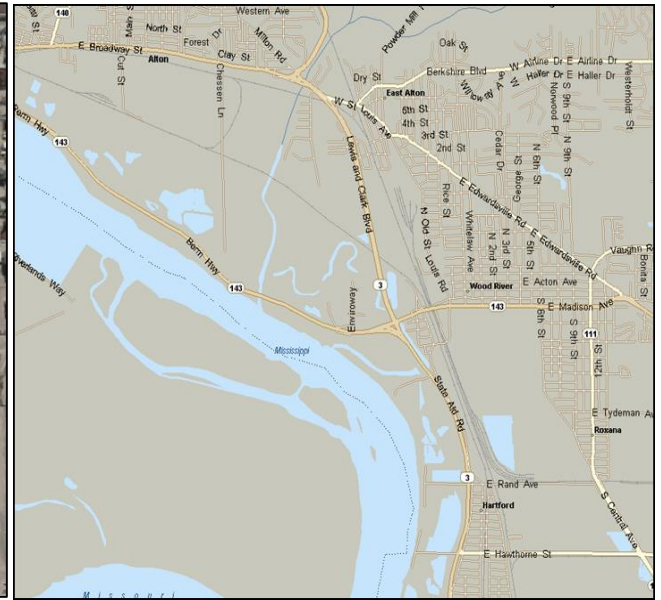
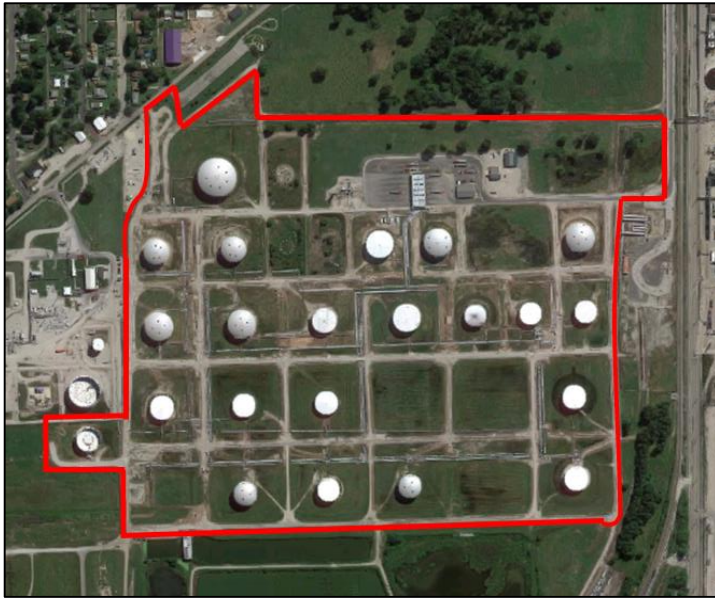


Wood River Terminal



Delivering Energy To Improve Lives And Create A Better World

Terminal Specifications

- 113 acres located
- 21 tanks ranging in size from 48,577 barrels to 204,584 barrels with a total storage capacity of 1,947,578 barrels

Commodities Handled

- Petroleum and Ethanol

Access

- Highway access from Interstates 255, 55 and 270 and Highways 3, 111 and 143
- Receiving Pipelines: Marathon, Explorer and Phillips 66
- Injecting Pipelines: BP / Marathon

Terminal Services

- Loading and Unloading Services by Tank Truck
- Pipeline Receipt / Injection
- Automated Truck Rack
- Product Storage
- Vapor Recovery / Vapor Combustion
- KMT Laboratory Testing
- Additional Services Available

Terminal Address

1000 BP Lane
Hartford, IL 62048
618-254-0694



Business Address

One Terminal Road
Carteret, NJ 07008
732-541-5161

Kinder Morgan provides energy transportation and storage services in a safe, efficient and environmentally responsible manner for the benefit of people, communities and businesses